



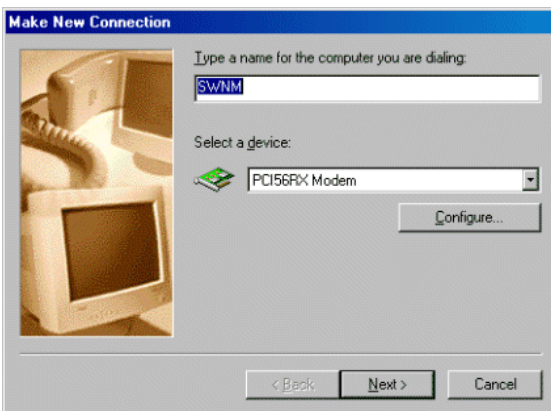
Windows 95/98 Dial-Up Networking



Setup Information

202 S. Diamond/Deming, NM 88030
Phone: 505 544-3483 Email: info@swnm.com

These instructions will guide you through the setup process for creating a dial-up networking connection for Southwestern New Mexico On-Line



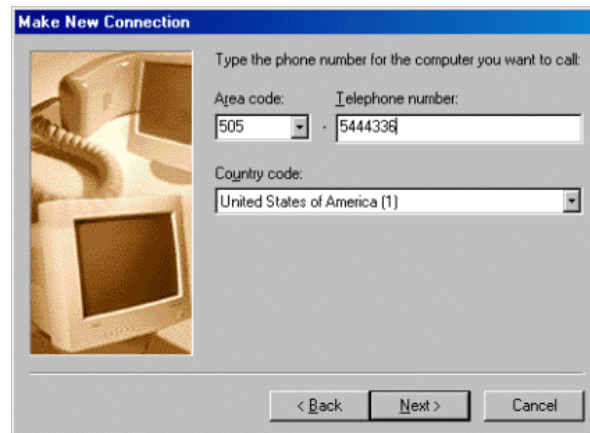
1. Double Click on the *My Computer* icon on your desktop.
2. Double Click on Dial-Up Networking.
3. Click on Make a New Connection. The box to the left comes up.

For the name of the connection, use either SWNM or SWNM On-Line, then click next.

The device entry should show YOUR modem. If you have more than one modem you can select the one to use here.

4. Enter the phone number and finish the process.

The dial-up access phone number for Southwestern New Mexico On-Line is 544-4336. Don't worry about the area code, we'll disable it later.

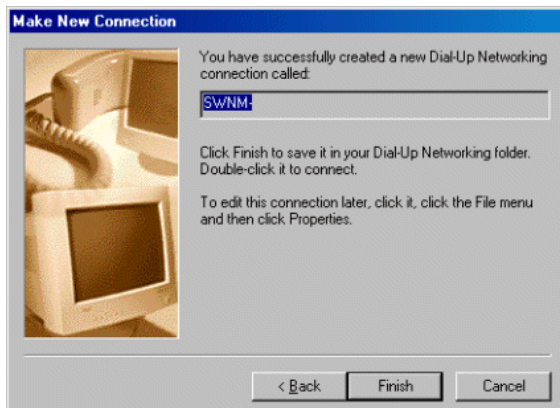


Click next..

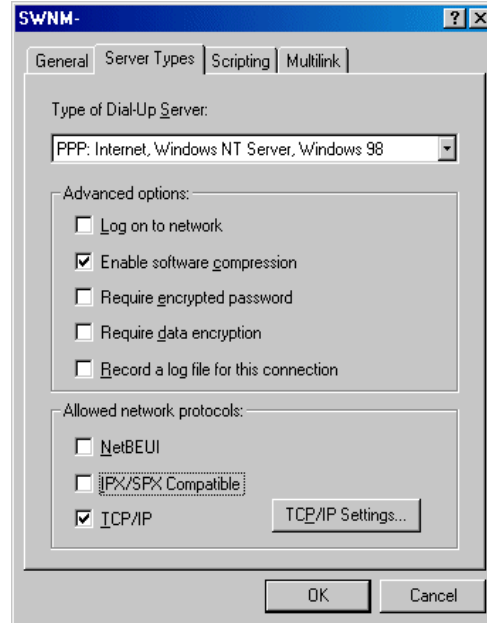
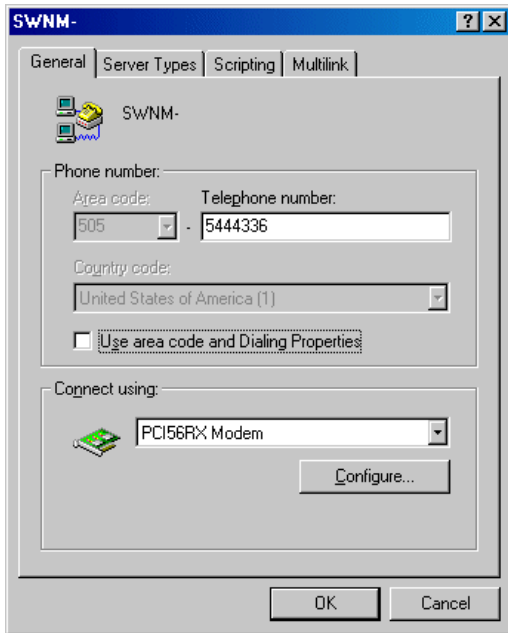
You have now successfully created a dial-up connection. **Click Finish.**

This will take you back to your dial-up networking folder.

5. Highlight the icon just created, and RIGHT click on it. Click on **properties.**

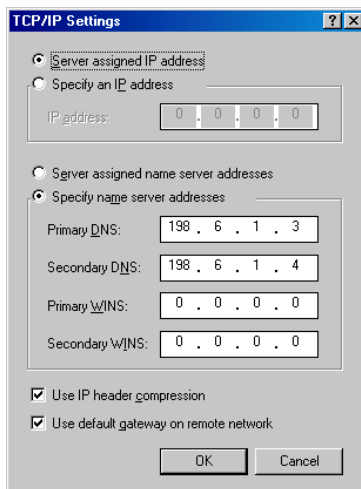


Dial-up Networking Setup Page 2



6. On the General Tab, **uncheck** use area code and Dialing Properties.

7. Click on the Server Types tab or button. Uncheck Log on to Network. The only allowed protocol should be TCP/IP. Uncheck the others. Then click on **TCP/IP settings**.



8. Fill in the DNS numbers as shown to the left. They are 198.6.1.3 and 198.6.1.4. Be sure to enter these numbers correctly. Then **click OK twice**.

You should now be back to the Dial-up Networking folder. To make a desktop shortcut, right click on the icon just created and click on create shortcut. You will receive a message Windows cannot create a shortcut here, do you want the shortcut on the Desktop. **Click Yes**.

9. To connect to SWNM On-Line, just

double click on the desktop icon. The box to the right will come up. Be sure the user name and password agree with those setup. User name is not case sensitive, but the password is. Check the save password box, and after logging on the first time, your password will be saved on your computer. **Click Connect**. You're on line!

